

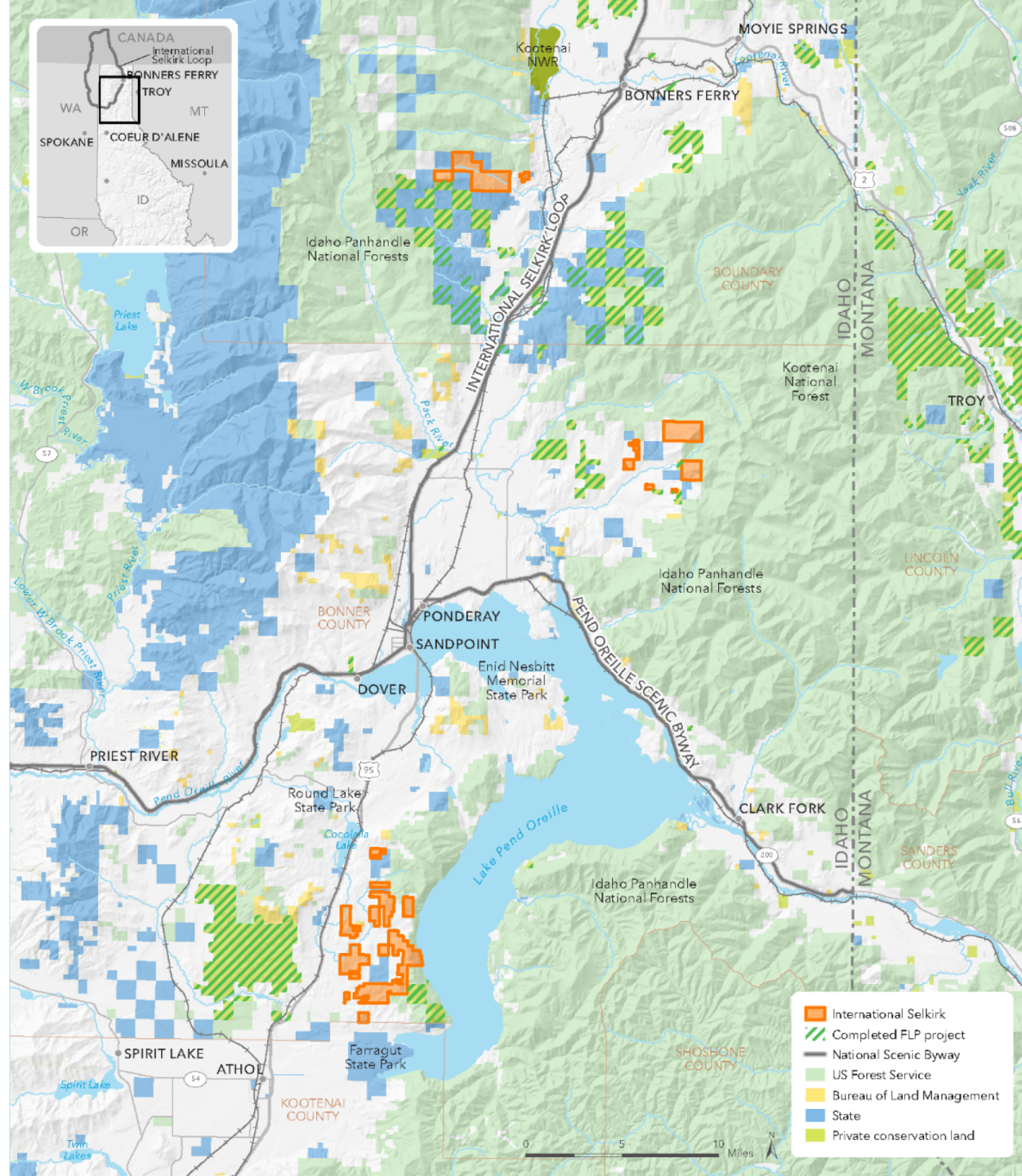
# International Selkirk Forest Legacy Project FY23



©chris boyer  
kestrelaerial.com







# Overview:

**Sponsors:** Idaho Department of Lands  
The Trust for Public Land

**Owner:** Stimson Lumber Company

**Acres:** ± 10,883 (Bonner Co.= 8,406 Boundary Co.= 2,477)

**Location:**

- Northern block: McArthur Lake Corridor – Ruby and Rapid Lightning drainages
- Southern Block: Careywood area near Farragut SP and Lake Pend Oreille

**Objective:** Permanently protect sustainable forest management, wildlife habitat, and public access by purchasing a **Conservation Easement**

## Benifits:

- Maintains Stimson Lumber Company's ability to own and manage these lands long-term. Providing local forest-based jobs that contribute to the local economy.
- Maintains the local tax base. Property remains in private ownership and is taxed as such. Existing taxes not impacted.
- Complements County Comprehensive Plans, which call for protection of private property rights, while maintaining and protecting traditional and historic land uses such as Forestry; this in turn protects local economies, the natural landscape, native vegetation, and wildlife habitat to the greatest extent possible.
- Protects important fish and wildlife habitat for a wide range of signature wildlife species including grizzly bear, Canada lynx, bull trout, westslope cutthroat trout, elk, mule deer, moose, black bear, and fisher.
- Secures public access for fishing, hunting, biking, wildlife viewing, and other non-commercial outdoor recreational uses.



# Ruby Creek



©chris boyer  
kestrelaerial.com



# Rapid Lightning Creek



©chris boyer  
kestrelaerial.com



# Lake Pend Oreille/Careywood



©chris boyer  
kestrelaerial.com





**THANK YOU  
&  
Questions**