

Lets talk bears

Amber Kornak
Bear Management Specalist
Idaho Fish and Game





Why am I here?

- Prevent and permanently resolve human-bear conflicts
- Provide an understanding of bear biology and behavior
- Decrease unnecessary mortality of grizzly bears and black bears



- **Options for Securing attractants- lets get ahead of the game!**



Securing your attractants



Securing Trash



[*Live* Bear Proof Trash Can Test - YouTube](#)



Electric Fencing

[How To Electric Fence for Bears – YouTube](#)





Who is who?

2009-08-09 9:55:16 AM M 1/3



JOE.LAKE

2009-09-26 7:54:34 AM M 1/3



JOE.LAKE

Bear Identification



Black Bear



Front track

No prominent
shoulder hump

Front claw



1-2" long

Tall ears

Straight face profile



Short
claws

Grizzly Bear



Front track

Shoulder hump

Front claw



2-4" long

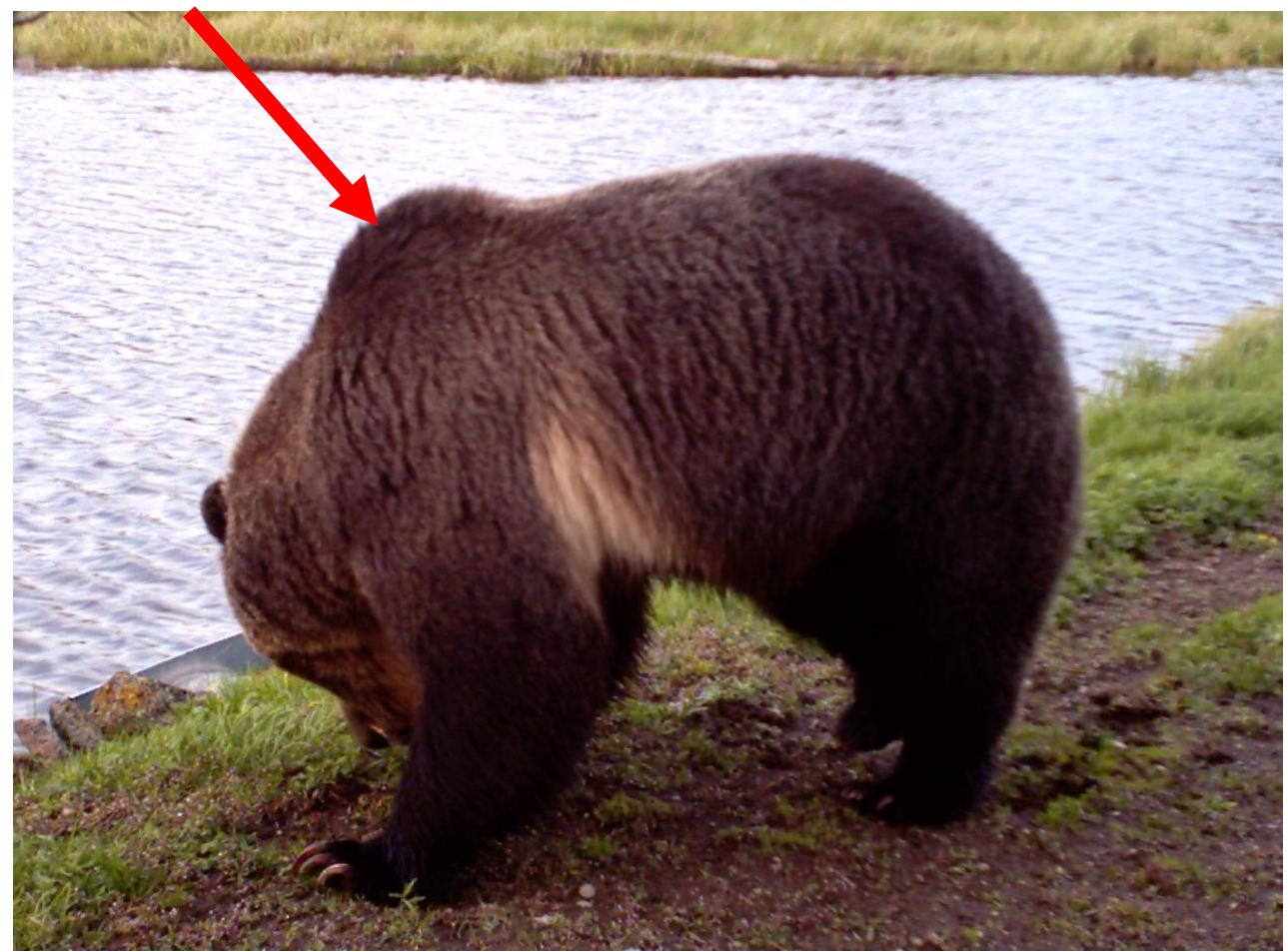
Short rounded ears

Dished face profile



Long
claws

Color and Size can be misleading.
Look for a combination of characteristics.



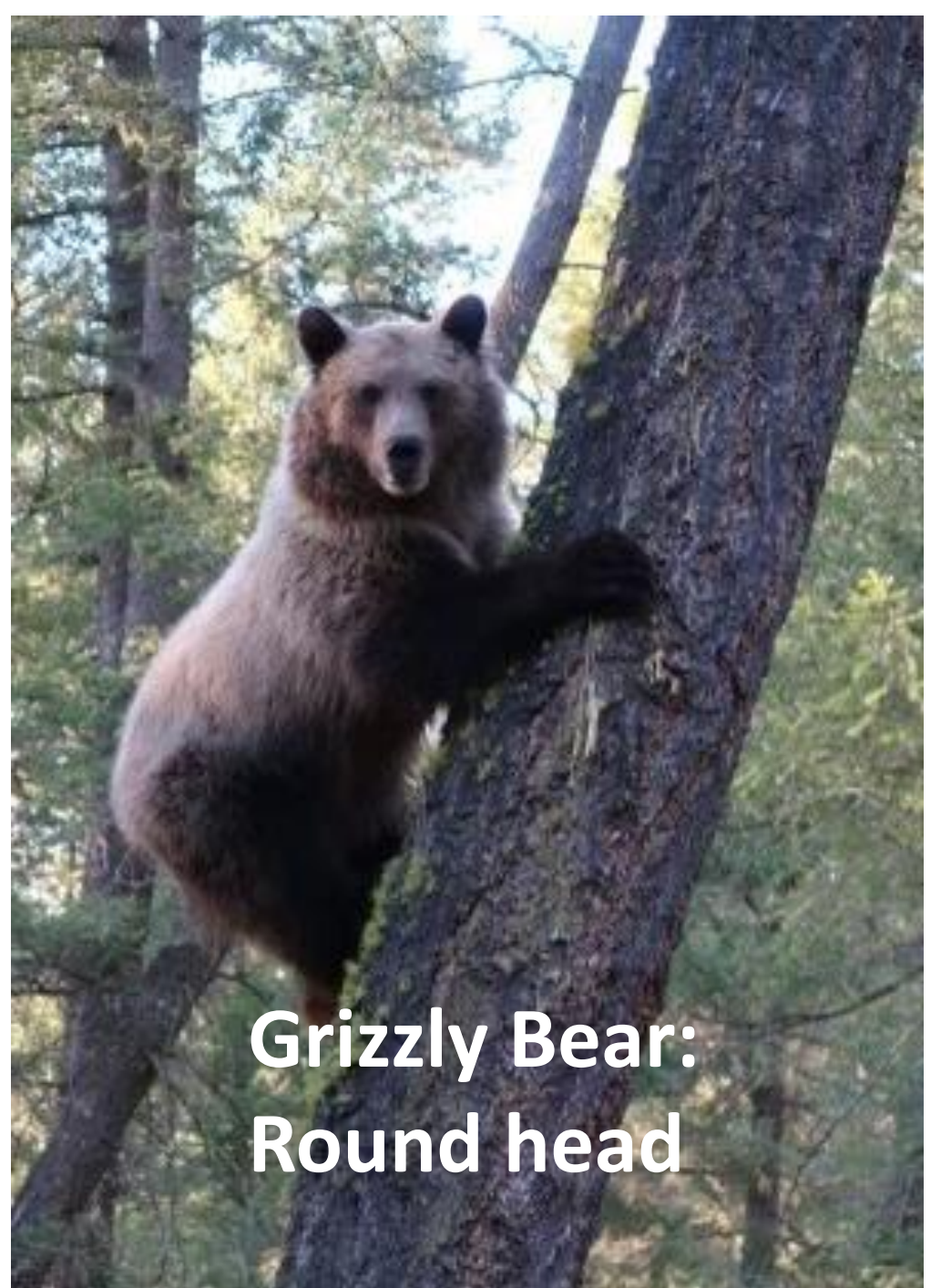
Hump verse a hair tuft



Black bear
Narrow ears and
face



Grizzly Bear:
Round head



Color is NOT a good
indicator!

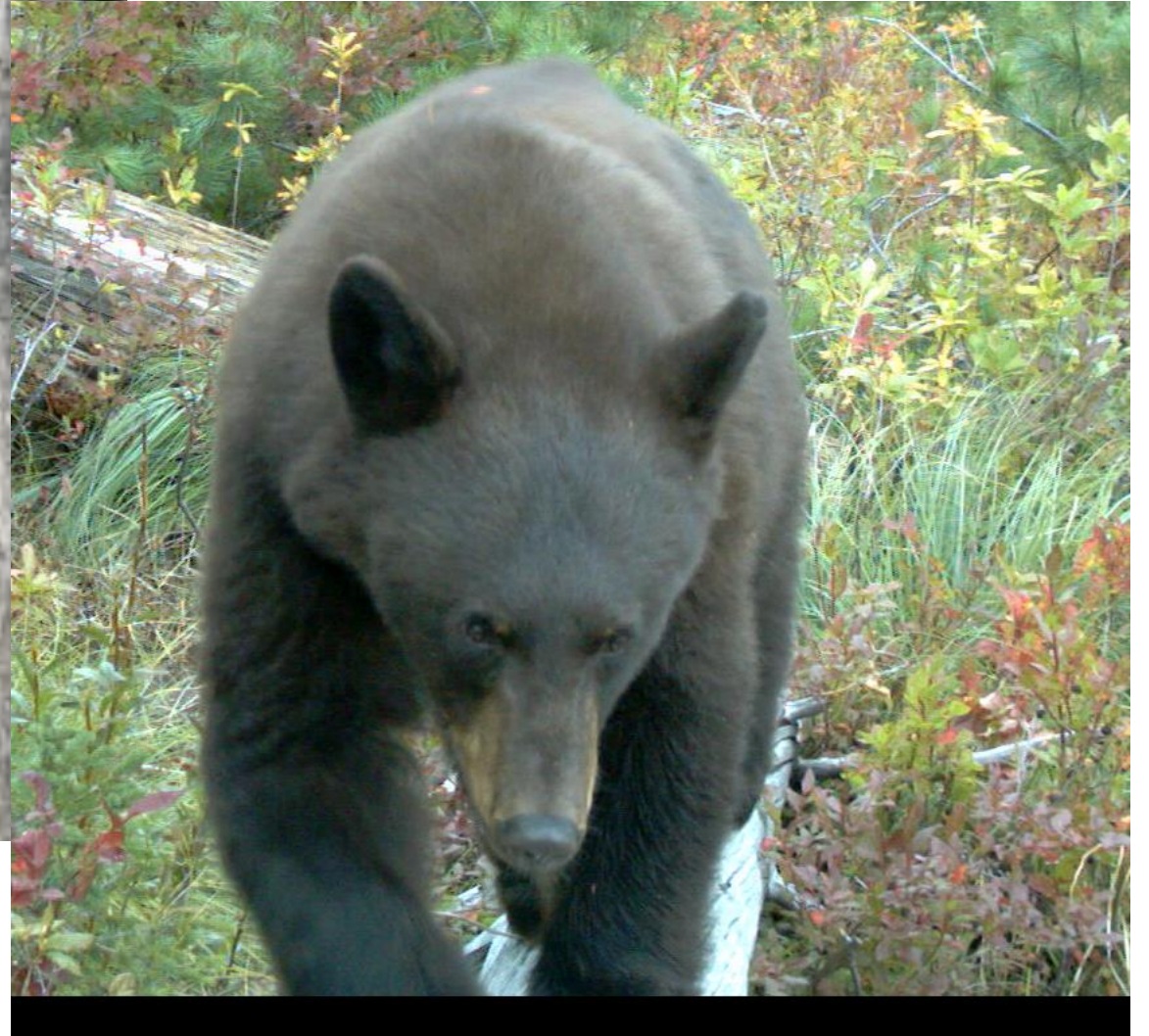
Black bear: narrow ears and
straight face



**Grizzly bear: dished face
and round head**



Narrow, straight face



L



How to avoid encounters

1. Be alert and on the look out for: scat, tracks, carcasses
2. Travel in 2 or more
avoid traveling by foot in dusk/dawn
3. Make noise: sing, yell, whistle, wear bells
4. Get to know your surroundings



Protect YOURSELF...and the bears

- 1-2% capsaicin; mucus membrane irritant. Directly impeded breathing , eyes water and burning
- Read the instructions, check expiration dates
- Know how to use and where it is on your person, PRACTICE



Questions?

